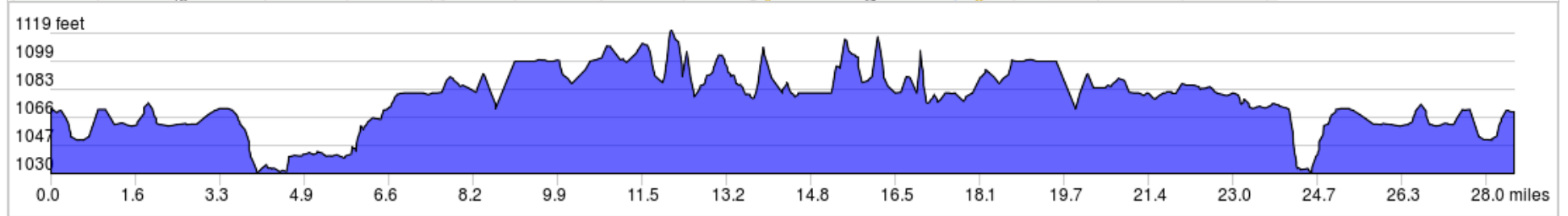
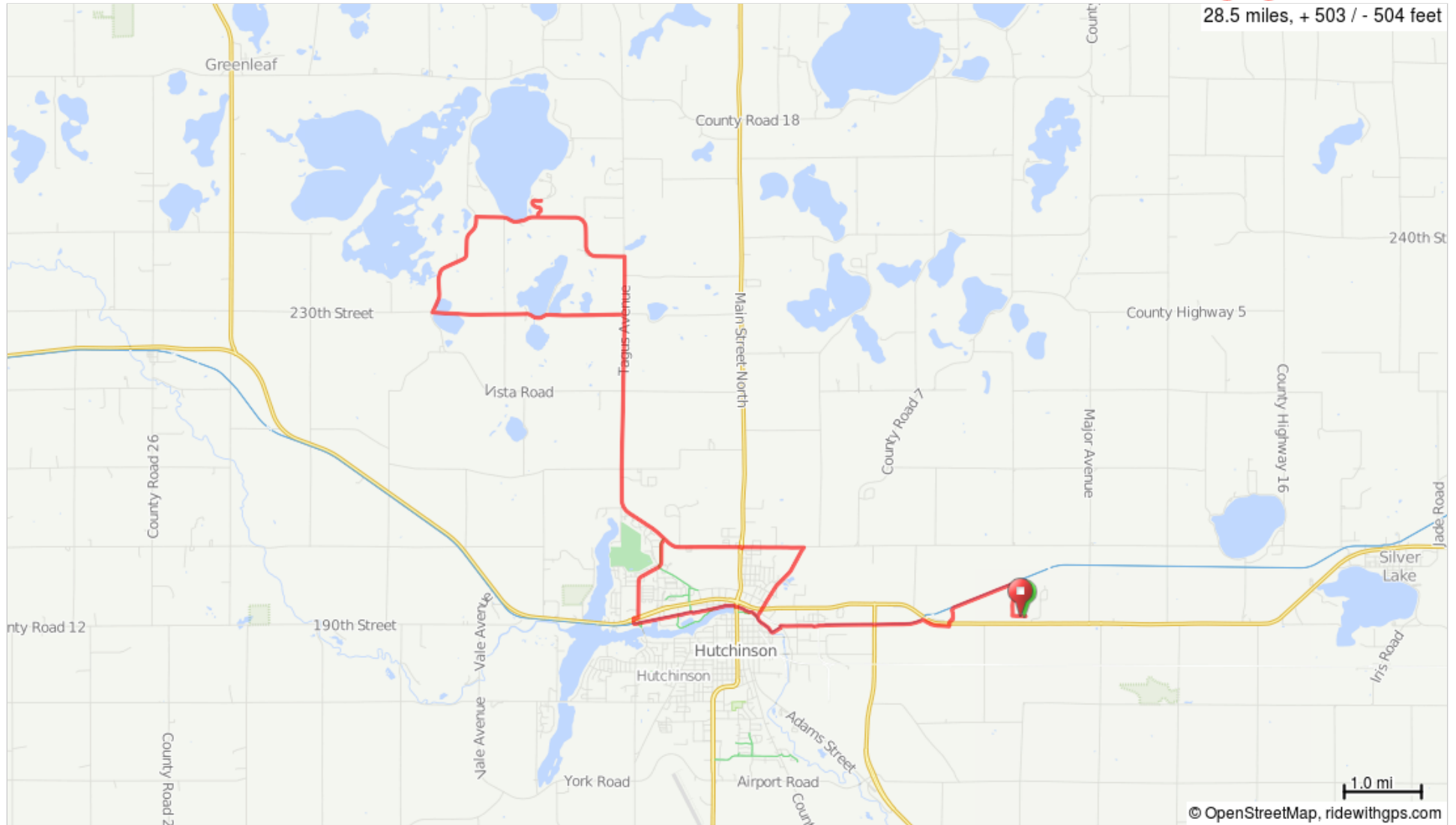


# Piepenburg Loop (28.5 Miles)



28.5 miles, + 503 / - 504 feet



Piepenburg Loop (28.5 Miles)

0.0	🚩	Start of route
0.0	↑	Start - Crow River Winery, follow vineyard GRAVEL path to Luce Line State Trail
0.6	←	L onto Luce Line State Trail
3.9	←	Cross Arch St SE and slight L to stay on Luce Line State Trail
4.3	←	Stay L and go under tunnel to stay on Luce Line State Trail
4.9	→	Keep R to stay on Luce Line State Trail
5.9	🍷	REST STOP - Food/Water Oddfellow's Park
5.9	↑	Leaving Rest Stop, cross over Luce Line State Trail, enter tunnel and follow Bike Trail
6.1	←	L on Bike Trail that runs parallel to School Rd NW

6.1 miles. +86/-98 feet

7.3	←	L onto N High Dr NW
8.0	↑	Continue onto Tagus Ave
11.2	←	L onto Belle Lake Rd
12.7	→	R into Piepenburg Park
13.0	🍷	REST STOP - Food/Water. Exit Rest Stop the way you came in
13.4	→	R onto Belle Lake Rd
14.3	←	L onto Route 19/Vista Rd
15.7	←	L onto 230th St
18.2	→	R onto Tagus Ave
20.6	↑	Continue onto N High Dr NW
22.4	↑	At the traffic circle, continue STRAIGHT onto N High Dr NE
23.2	→	R onto Bluff St NE
24.3	←	L onto Luce Line State Trail

18.2 miles. +386/-427 feet

24.7	←	L at Y, then cross Arch St SE to stay on Luce Line State Trail
28.0	→	R off of Luce Line State Trail, go across bridge and continue on vineyard GRAVEL path back to Crow River Winery
28.5	↑	End at CRW
28.5	🚩	End of route

4.2 miles. +58/-46 feet